



GAT MONTHLY MEMBERSHIP PROGRESS REPORT

Results as of: 11/30/2021

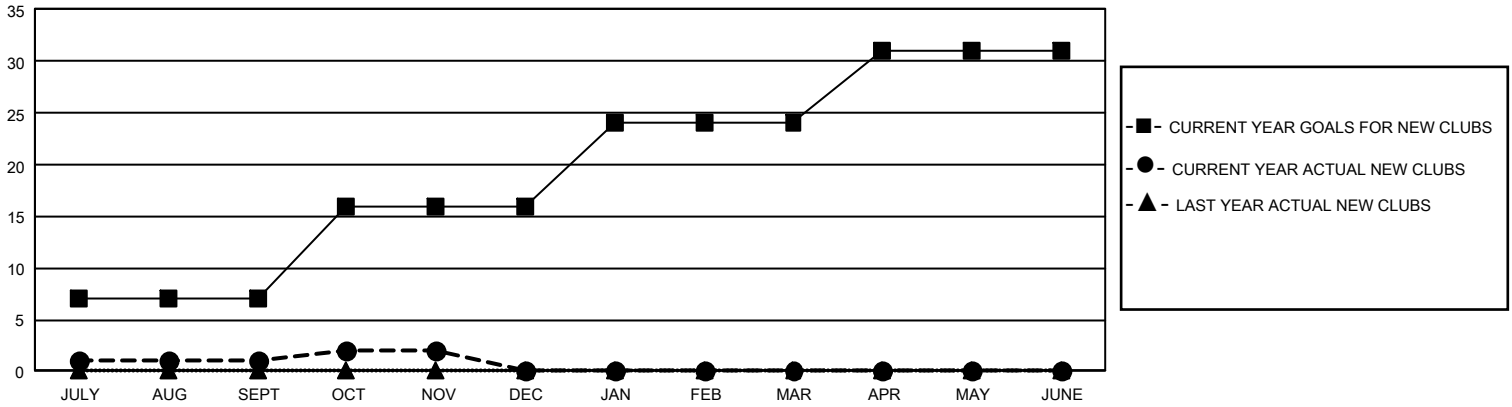
GMT Constitutional Area 1, Group J

REPORT DOES NOT INCLUDE CLUBS IN UNDISTRICTED AREAS.

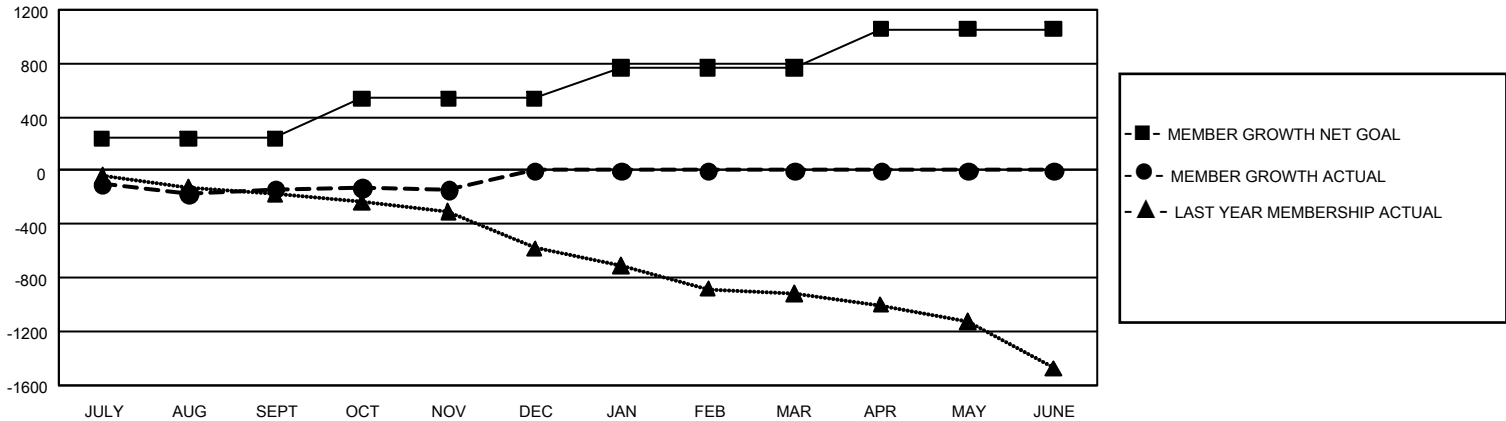
| Clubs | | | |
|-----------------------|---------------|-----------|---------------|
| RESULTS FOR 2021-2022 | | | |
| QUARTER | NEW CLUB GOAL | NEW CLUBS | DROPPED CLUBS |
| JULY/AUG/SEPT | 21 | 1 | 10 |
| OCT/NOV/DEC | 27 | 1 | 7 |
| JAN/FEB/MAR | 24 | 0 | 0 |
| APR/MAY/JUNE | 21 | 0 | 0 |

| Members | | | |
|-----------------------|------------------------|----------------------|--|
| RESULTS FOR 2021-2022 | | | |
| QUARTER | MEMBER GROWTH NET GOAL | MEMBER GROWTH ACTUAL | DROPPED MEMBERS ACTUAL (including transfers) |
| JULY/AUG/SEPT | 241 | 561 | 629 |
| OCT/NOV/DEC | 297 | 390 | 353 |
| JAN/FEB/MAR | 231 | 0 | 0 |
| APR/MAY/JUNE | 287 | 0 | 0 |

GOALS AND ACTUAL NEW CLUBS CUMULATIVE



GOALS AND ACTUAL MEMBERS CUMULATIVE



| | | | |
|------------------------|---|---------------------------------|-----------------|
| DROPPED CLUBS: 17 | 335 CLUBS OF 935 ADDED 1 OR MORE NEW MEMBERS | <u>GENDER DISTRIBUTION</u> | |
| <u>DROPPED MEMBERS</u> | | MALE | 14,985 (70.48%) |
| DECEASED | 140 | FEMALE | 6,276 (29.52%) |
| CLUB CANCELLED | 60 | NON BINARY | 1 (0.00%) |
| OTHER | 782 | PREFER NOT TO ANSWER | 0 (0.00%) |
| TOTAL | 982 | TOTAL FAMILY UNIT MEMBERS | 4,122 |
| | CLICK HERE FOR CUMULATIVE MEMBERSHIP DATA | FAMILY MEMBERS PAYING HALF DUES | 2,100 |